



## Annual Monitoring

- Species Surveys
- Soil & Trails Monitoring
- Restoration & Rehabilitation Projects
- Photo Point Program
- Storm Water Quality

Annual reports (2003 to 2010) are available on [www.CarnegieGeneralPlan.com](http://www.CarnegieGeneralPlan.com)

## Studies Used in Analysis

- Wetland delineation verified by US Army Corps of Engineers
- California Natural Diversity Database
- California Native Plant Society's online Inventory of Rare and Endangered Plants of California
- Vegetation map (ground-truthed by biologists)
- Reconnaissance level surveys of wildlife and botanical resources
- Storm Water Management Plan
- Corral Hollow Watershed Assessment

## Regulatory Agency Consultation

Carnegie SVRA staff met with regulatory agency representatives, including the Water Board, US Fish and Wildlife Service, and California Department of Fish and Wildlife.

- On-site meetings
- Site tours (including acquisition area)
- Tour of Hollister Hills State Vehicular Recreation Area

## Other Resources Reviewed

- Alameda County Resource Conservation District Voluntary Local Program
- East Alameda County Conservation Strategy
- Managing Rangelands to Benefit California Red-legged Frogs and California Tiger Salamanders

## California Natural Diversity Database



© 2005 Dieter Wilken



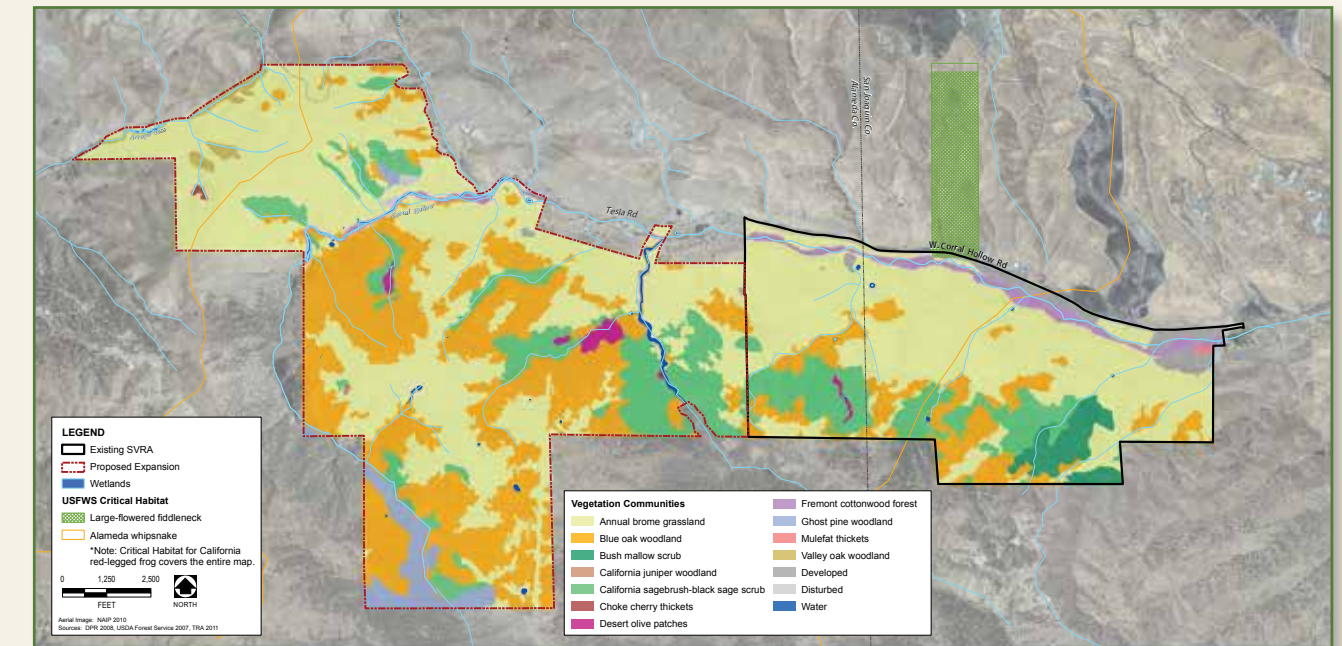
© Dieter Wilken



© 2010 Scott Trageser



## Vegetation Map



## Restoration



## Reconnaissance level surveys of wildlife and botanical resources



## Species Surveys

